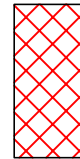
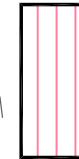
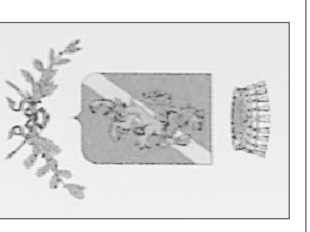
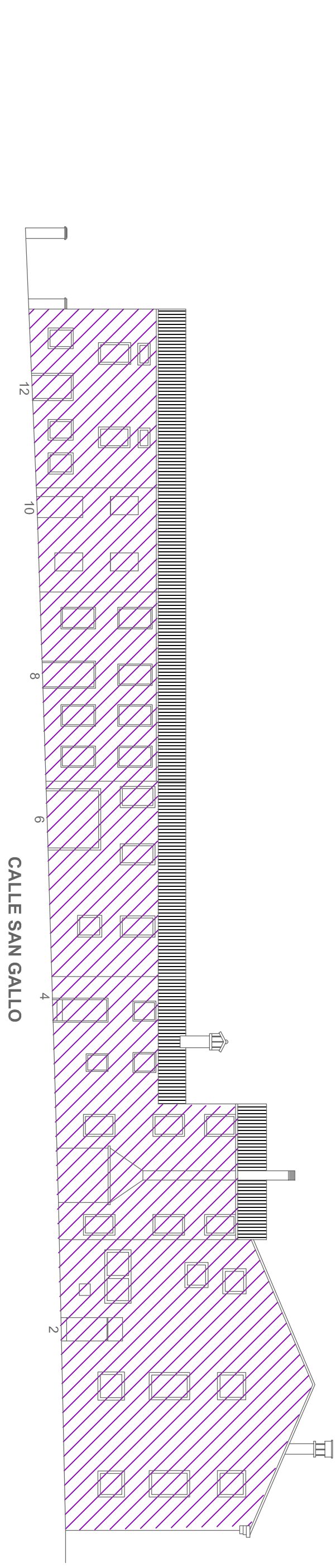
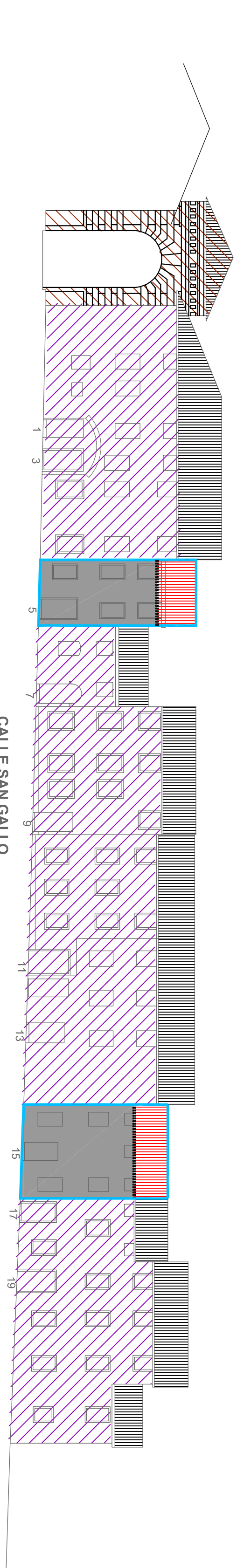
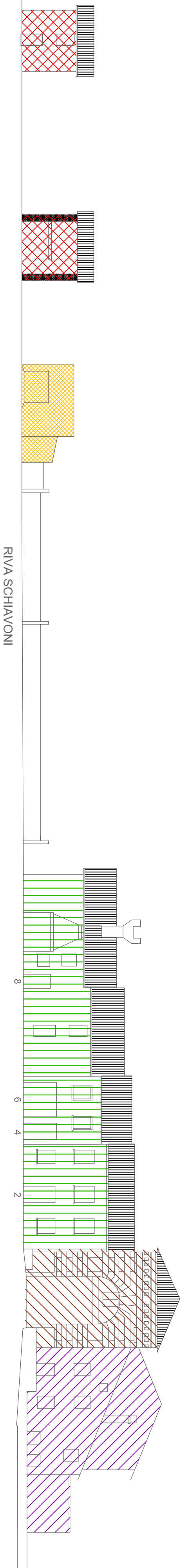
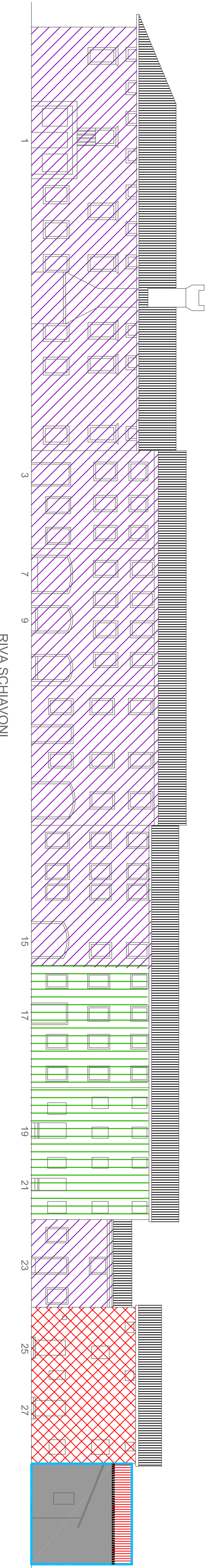




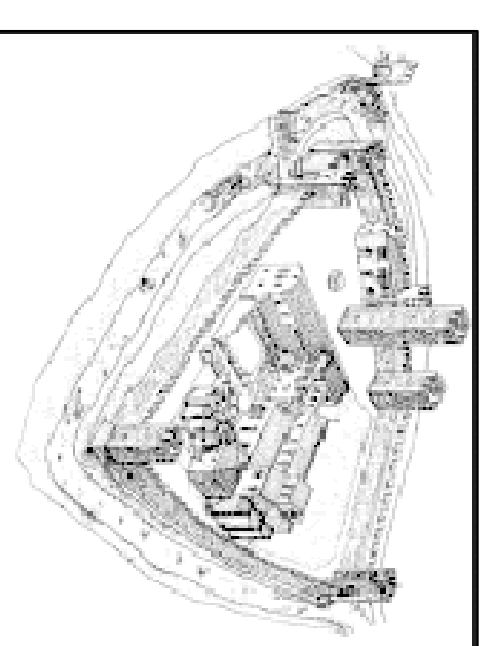
LEGENDA

Categorie operative edilizie

-  RESTAURO CONSERVATIVO
-  CONSERVAZIONE TIPOLOGICA
-  RISANAMENTO CONSERVATIVO
-  RISTRUTTURAZIONE EDILIZIA
-  AMPLIAMENTO E SOPRAELEVAZIONE
-  NUOVA COSTRUZIONE
-  DEMOLIZIONE SENZA RICOSTRUZIONE
-  DEMOLIZIONE CON RICOSTRUZIONE
-  ALLINEAMENTO OBBLIGATORIO DI GRONDA



Provincia di Pordenone COMUNE DI SESTO AL REGHENA



PROFESSIONISTA INCARICATO
 arch. Giovanni Bordin
 ViaF.lli Bandiera, 40
 33170 Pordenone
 C.F. BRTGNM24C04H87P
 tel. + fax 0434262587 email: info@bordini1971.it

OPERA
 Piano Regolatore Particolareggiato
 del Centro Storico

COMITENTE
 Comune di Sesto al Reghena

PROFESSIONE IN CARICA		SCALE	
PROGETTO	P5,c	07/2005	1:200
PROGETTO	P5,c	COMISSA	A001
PROGETTO	P5,c	PROV. COM.	A001